

Unloading valves

Type DA700
up to 700 bar
NG 6 up to 25 l/min

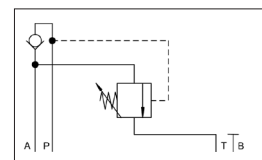
Features

- Direct operated valve
- Pressure stability
- Safe operation
- Precise pressure adjustment
- Porting NG 6 according to DIN 24340
- Maximum pressure setting with lock nut



Applications

The valve serves to shut-off the low-pressure flow depending on the prevailing pressure. As soon as the system reaches the pre-set shut-off pressure, the low-pressure flow is switched to non-pressurised circulation, so that only the HP pump delivers into the system. Once the pressure drops below the pre-set value, the low-pressure flow is added again. As the maximum shut-off pressure is secured by lock nuts, it cannot be exceeded by accident.



Technical data

| | | |
|---|---|------------------------------|
| Hydraulic fluid | mineral oil according to DIN 51524 (other fluids on request) | |
| Fluid temperature range | - 20 to 80 °C | |
| Ambient temperature range | - 30 to 50 °C | |
| Viscosity range | 5 to 400 mm ² /s | |
| Porting | NG 6 according to DIN 24340/ISO 4401/CETOP RP 121 H | |
| Max. operating pressure connection P | 700 bar | |
| Max. operating pressure connection A, T | 350 bar | |
| Druck-Einstellbereich Anschluss LP | 25 bis 150 bar | |
| Max. flow rate | 25 l/min | |
| Filtration (recommendation) | according to NAS 1638, class 6 or ISO/DIN 4406 17/15/12 | |
| Weight | 2.1 kg | |
| Material/ surface treatment | housing | steel, galvanized, chromated |
| | cartridge | steel corrosion resistant |
| | adjusting knob | plastic |

Type DA700

to 700 bar
NG 6 up to 25 l/min

Ordering code

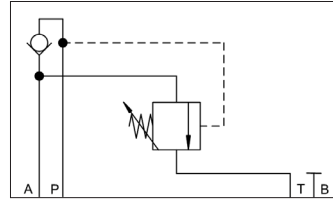
| Example | DA | 700 | - | 6 | - | A | - | 350 | - | V | - | | | 00 |
|------------------------------|---|-----|---|---|---|---|---|-----|---|---|---|--|--|----|
| Unloading valve | | | | | | | | | | | | | | |
| Type | BV700 | | | | | | | | | | | | | |
| Size | 6 | | | | | | | | | | | | | |
| Low pressure port | A (connection for low-pressure pump) | | | | | | | | | | | | | |
| Max. shutoff pressure | 350 bar | | | | | | | | | | | | | |
| Seal material | V (FPM) other seal materials on request | | | | | | | | | | | | | |
| | Special design 01 ... 99 (00 for standard) | | | | | | | | | | | | | |
| | Part index Please leave it blank (small letters a-z; different letters do not effect interchangeability) | | | | | | | | | | | | | |
| | Design revision see dimension drawings (capital letters A-Z; identical letters equal same connecting dimensions) | | | | | | | | | | | | | |

Product information

| Type | Part number |
|---------------------|-------------|
| DA700-6-A-350-V-*00 | 3682115 |

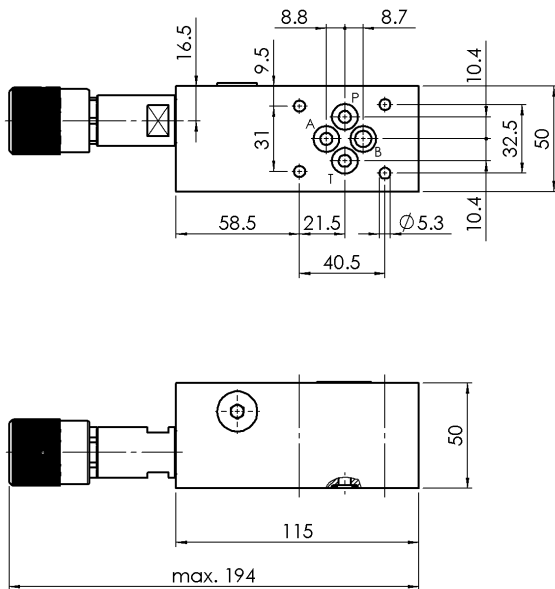
Note: The unloading valve is designed as end valve.

Hydraulic schematic



- A Connection for low-pressure pump
- P Connection for high-pressure pumps
- T Tank connection

Dimensional drawing



Accessories

- For each valve the following is included:
- 4 pieces O-rings 9,25 x 1,78 mm 90° ShA
- 1 Adjusting knob mounted
- 1 Cap in addition

Tie bolts/ fixing screws and subplates
see technical data sheet AP/ RP

Type DA700

to 700 bar
NG 6 up to 25 l/min